



भारत सरकार
GOVERNMENT OF INDIA
स्वास्थ्य सेवा महानिदेशालय

DIRECTORATE GENERAL OF HEALTH SERVICES

लेडी हार्डिंग मेडिकल कॉलेज एव् श्रीमती सुचेता कृपलानी हॉस्पिटल, नई दिल्ली

LADY HARDINGE MEDICAL COLLEGE & SMT. S. K. HOSPITAL, NEW DELHI



RTI Suo Moto Disclosure

The Particulars of its Organisation, functions and duties

1. Name & address of the Organization:

Lady Hardinge Medical College & Associated Hospitals
C-604, Shaheed Bhagat Singh Marg, Connaught Place
New Delhi, Delhi-110001, India

Available via link:

<http://lhmc-hosp.gov.in/index1.php?lang=1&level=1&sublinkid=19&lid=67>

Phone: EPBAX: 011-23363728/23408100

Fax: 011-23340566

E-Mail: ddalhmc2014@gmail.com / registraracademichmc@gmail.com

2. Head of the organization:

Dr.(Prof) N N Mathur [MS,DNB, FAMS]
Director & Addl. DGHS & Director Professor (ENT)
Lady Hardinge Medical College & Associated Hospitals

Available via link:

<http://lhmc-hosp.gov.in/index1.php?lang=1&level=1&sublinkid=24&lid=75>

3. Vision, Mission & Key Objectives:

VISION

To establish LHMC as an Institution of national repute in the field of

- Medical Education
- Hospital Health Care & community outreach
- Medical Research

MISSION

- To provide state of the art Medical Education & Training
- To provide tertiary level health care facilities
- To conduct research on important medical & public health issues
- To support and implement national Health policy & Programmes

OBJECTIVES

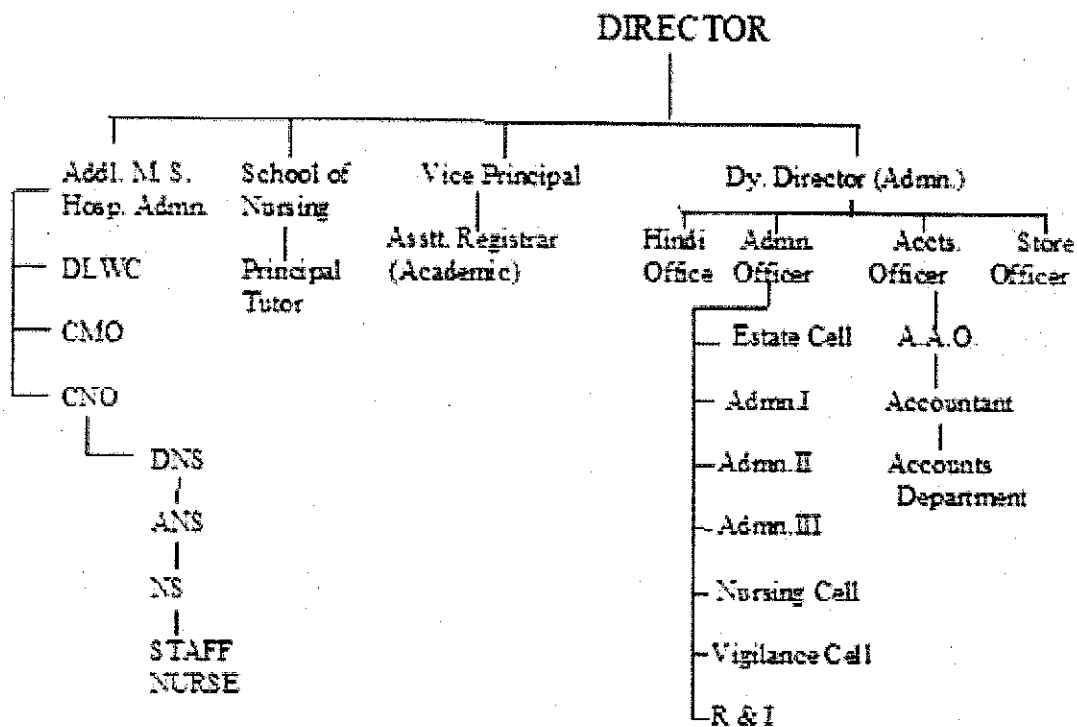
- To improve & sustain high standards of teaching & training activities for under graduate & post graduate Medical & nursing courses.
- To improve & sustain tertiary level health care services, including out-patient services, emergency services, diagnostic services & indoor patient services.
- To conduct intramural & extramural research on important medical issues relevant to the country.
- To contribute in national Health Programmes & policy making in health related issues.
- To improve governance in various administrative sections.

4. Function and duties of the Institute:

With a view to serve the society through quality healthcare this institute continues to:

- a. Provides undergraduate and postgraduate teaching and training in the science of modern medicine and other allied sciences, including physical and biological sciences.
- b. Provides facilities for research in the various branches of such sciences.
- c. Conduct of new experiments in new methods of medical education, both undergraduate and postgraduate.
- d. Prescribe courses and curricula for both undergraduate and post graduate studies.
- e. Train teachers for the different medical colleges in India.
- f. Hold examination and grant such degrees and other academic distinctions and titles in undergraduate and postgraduate medical education as may be laid down in the regulations.
- g. Provide quality healthcare to the poor and needy and any citizen who is seeking care to the Hospital.

5. Organizational Structure:



History of LHMC:

The Lady Hardinge Medical College for women was founded in 1914 to commemorate the visit of Her Majesty Queen Mary in 1911-12. Lady Hardinge the wife of the then Viceroy was the first to take initiative for starting a medical college for women, as the lack of separate medical college for women made it almost impossible for Indian women to study medicine.

The foundation stone of this institution was laid by Lady Hardinge on 17th March, 1914. Unfortunately this great lady died later in the same year and on the suggestion of Queen Mary the college and the hospital was named after Lady Hardinge to perpetuate the memory of its founder.

The college and hospital was formally opened by Lord Hardinge the then Viceroy of India on 17th February 1916. The close association of countess of Dufferin Fund Council continued over many years and senior teaching staff almost exclusively consisted of its members till India became independent.

The college started under the able leadership of Dr. Kate Platt, who was the first Principal of the college. The duration of course covered a period of 7 years including 2 years of pre-medical intermediate science course or Punjab University. The premedical science departments were closed in 1935, thus reducing the course in the college from 7 years to 5 years. In 1960 rotating internship was introduced for 6 months. The MBBS course was reduced from 5 years to 4 1/2 years in 1969 compulsory internship of one year was introduced.

The number of admissions to the first year was increased gradually from 16 per year in 1916 to 60 in 1956. In 1961 the admissions were increased to 100 and were further raised to 130 in 1970. To implement the Central Educational Institution (Reservation In Admission) Act 2006 LHMC increased under graduate admissions to 150 in 2008 and now 240 under grading and advanced equerry year.

Since 1950, the college has been affiliated to University of Delhi. Post-graduate courses were started in 1954 in affiliation with Punjab University and later on with University of Delhi in 1956. To start with only female post-graduate students were admitted, but since 1970 both males and female students are being enrolled for various postgraduate courses. Presently LHMC is admitting 152 PG candidates, 4 seats of MCH Paediatric Surgery and 4 seats of DM Neonatology.

Starting in 1916 with only 80 beds for the departments of Medicine, Obstetrics and Gynaecology, LHMC has now bed strength of 877 beds in Smt. S.K. Hospital and 377 beds in Kalawati Saran Children Hospital. A separate outpatient block was started in 1958 to cater to the needs of ever increasing population of Delhi.

Kalawati Saran Children Hospital was established on 17th March 1956 as a center of excellence in pediatric care and research. At the outset it had only 50 beds, gradually by 1994 the bed strength was increased to 350 and presently there are 377 beds in KSCH. It has the largest Neonatal wing in Delhi with 84 beds. The opening of Indo-Japan new block has augmented various medical facilities for the patients.

Training school for nurses started modestly in 1916 with 11 probationers admitted to the school every year. The school was further expanded to admit 50 students. The School was upgraded to Nursing College of Nursing 2007.